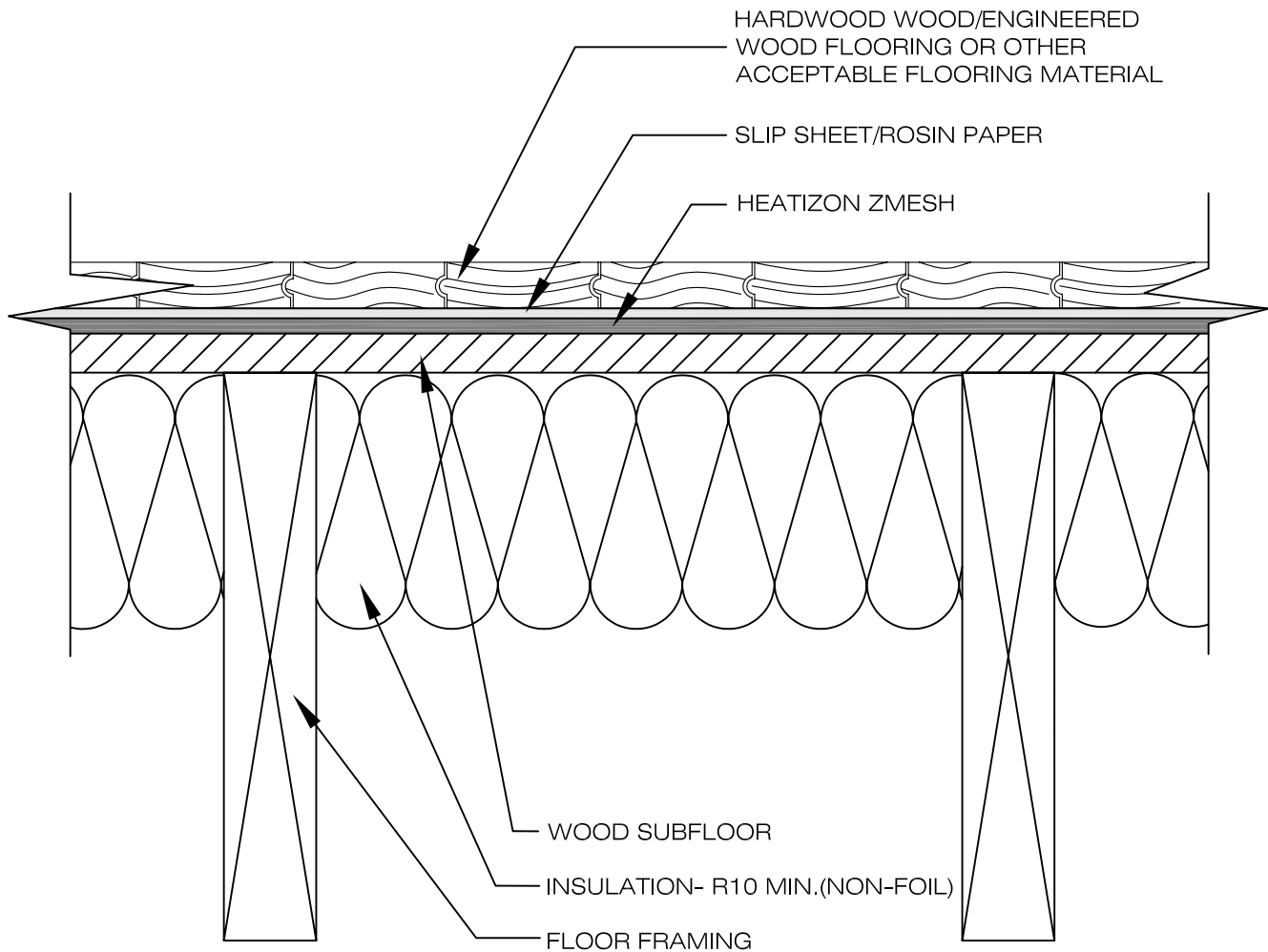


WARNING!!

DO NOT CUT OR DAMAGE ZMESH. DO NOT ALLOW ZMESH TO COME INTO CONTACT WITH ANY OTHER ELECTRICALLY CONDUCTIVE MATERIAL. DO NOT FASTEN THROUGH ANY ELECTRICALLY CONDUCTIVE MATERIAL AND ZMESH SIMULTANEOUSLY.

NOTE:

HEATIZON SYSTEMS RECOMMENDS THAT THE RADIANT FLOORING GUIDE, PUBLISHED BY THE RADIANT PANEL ASSOCIATION BE CONSULTED PRIOR TO SELECTING FLOOR COVERINGS. IN ADDITION, ALWAYS CONSULT YOUR FLOOR COVERING SUPPLIER ABOUT THE SUITABILITY OF FLOOR COVERINGS FOR INSTALLATION OVER IN-FLOOR RADIANT HEATING PRODUCTS.



DRAWING NO.:

FH-1

**ZMESH UNDER HARDWOOD
FLOORING ON WOOD SUBFLOOR**

DRAWING BY:

ACI

DATE:

NOV 2009

HEATIZON SYSTEMS

advanced floor heating/ snow and ice removal systems

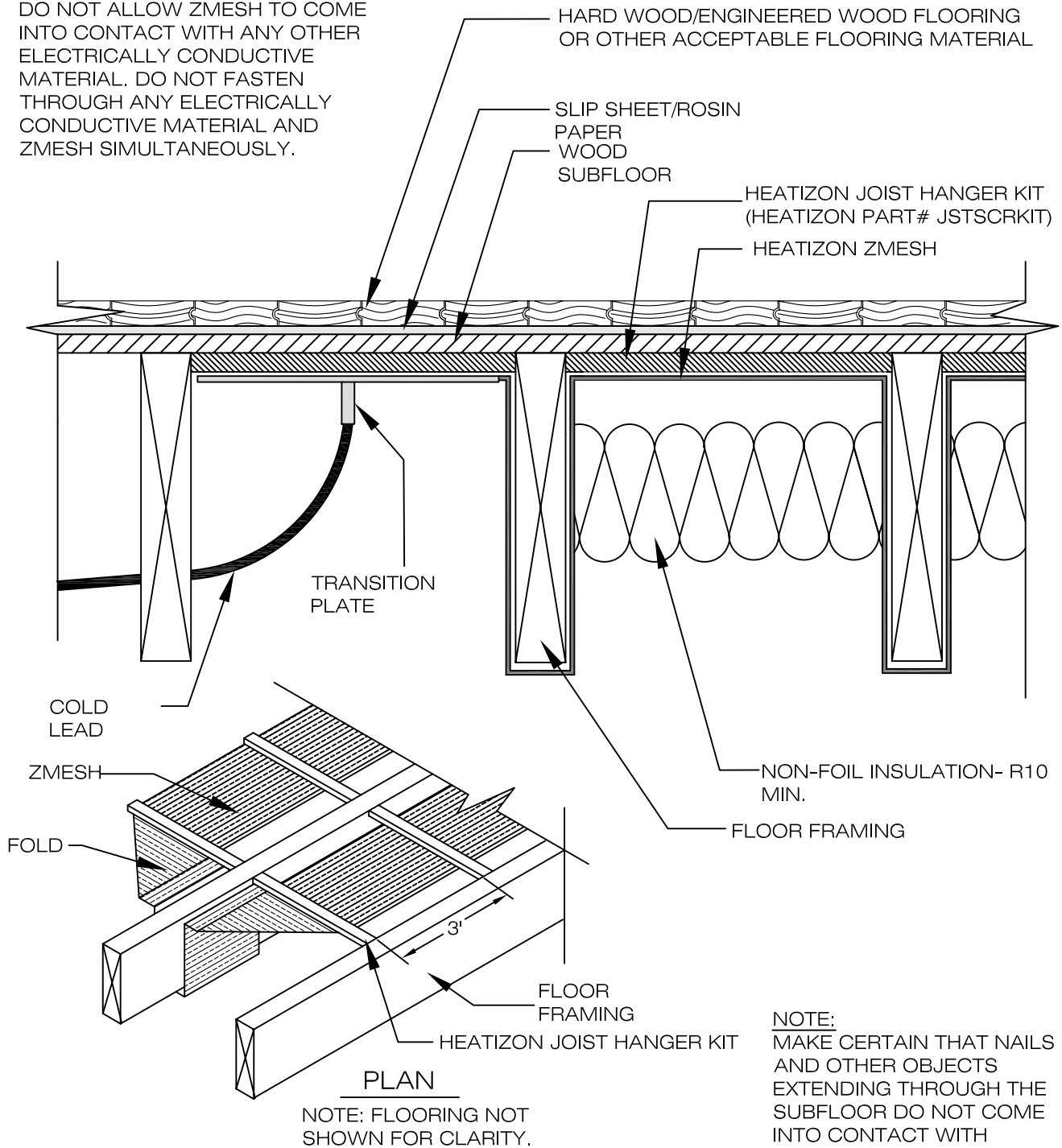
4137 SOUTH 500 WEST, MURRAY, UTAH 84123 PH (801) 293-1232 FAX (801) 293-3077

©2009

When installing Heatizon Systems products, strict compliance with the National Electrical Code, the Canadian Electrical Code, state and local buildings codes, and Heatizon Systems Design and Installation Manual is essential.

WARNING!!

DO NOT CUT OR DAMAGE ZMESH. DO NOT ALLOW ZMESH TO COME INTO CONTACT WITH ANY OTHER ELECTRICALLY CONDUCTIVE MATERIAL. DO NOT FASTEN THROUGH ANY ELECTRICALLY CONDUCTIVE MATERIAL AND ZMESH SIMULTANEOUSLY.



NOTE:
MAKE CERTAIN THAT NAILS AND OTHER OBJECTS EXTENDING THROUGH THE SUBFLOOR DO NOT COME INTO CONTACT WITH ZMESH.

DRAWING NO.:

FH-1M

**ZMESH RETROFIT UNDER
WOOD SUBFLOOR**

DRAWING BY:

ACI

DATE:

NOV 2009

HEATIZON SYSTEMS

advanced floor heating/ snow and ice removal systems

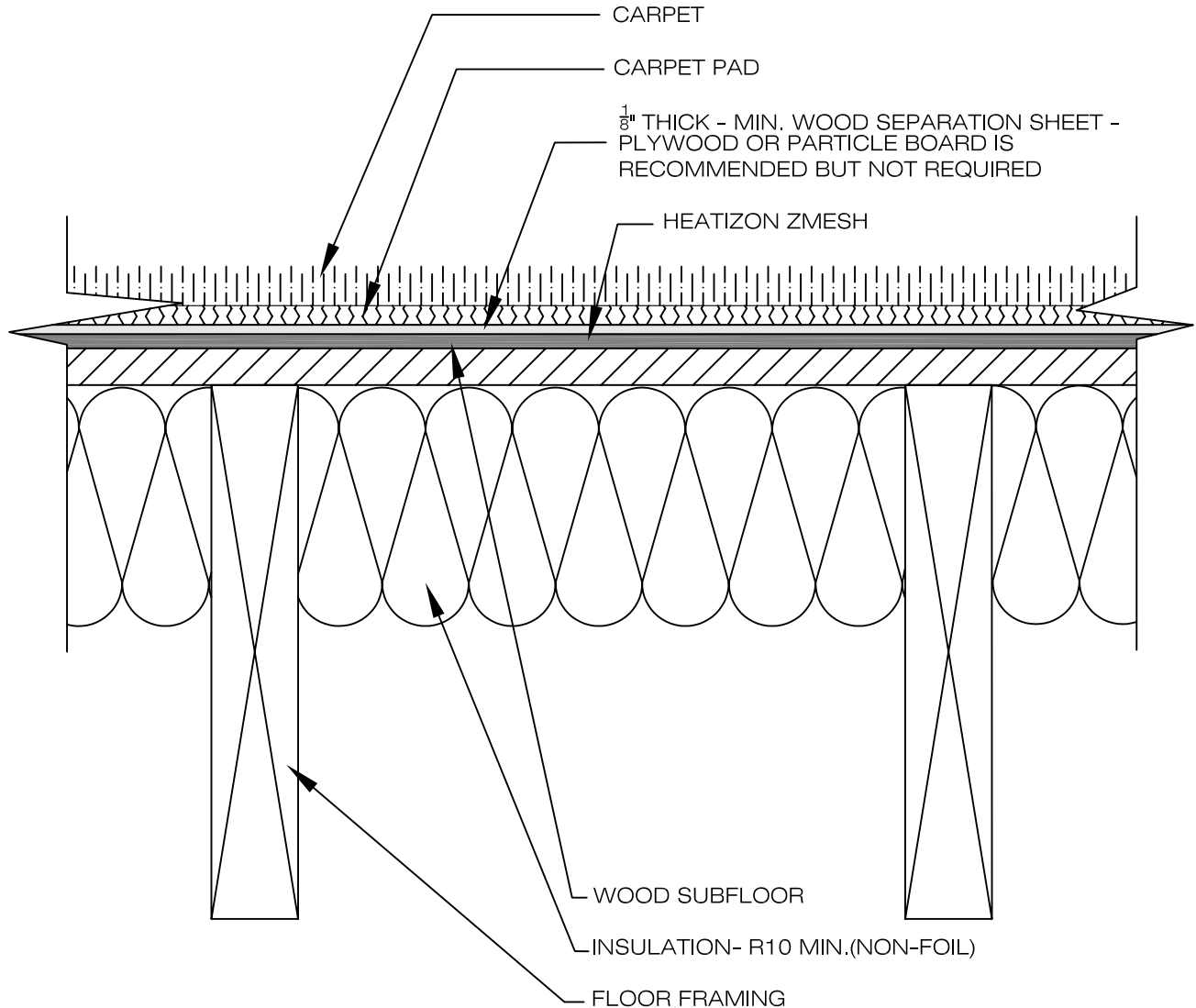
4137 SOUTH 500 WEST, MURRAY, UTAH 84123 PH (801) 293-1232 FAX (801) 293-3077

©2009

When installing Heatizon Systems products, strict compliance with the National Electrical Code, the Canadian Electrical Code, state and local buildings codes, and Heatizon Systems Design and Installation Manual is essential.

WARNING!!
 DO NOT CUT OR DAMAGE ZMESH.
 DO NOT ALLOW ZMESH TO COME
 INTO CONTACT WITH ANY OTHER
 ELECTRICALLY CONDUCTIVE
 MATERIAL. DO NOT FASTEN
 THROUGH ANY ELECTRICALLY
 CONDUCTIVE MATERIAL AND
 ZMESH SIMULTANEOUSLY.

NOTE:
 HEATIZON SYSTEMS RECOMMENDS THAT THE
 RADIANT FLOORING GUIDE, PUBLISHED BY
 THE RADIANT PANEL ASSOCIATION BE
 CONSULTED PRIOR TO SELECTING FLOOR
 COVERINGS. IN ADDITION, ALWAYS CONSULT
 YOUR FLOOR COVERING SUPPLIER ABOUT
 THE SUITABILITY OF FLOOR COVERINGS FOR
 INSTALLATION OVER IN-FLOOR RADIANT
 HEATING PRODUCTS.



DRAWING NO.:

FH-2

**ZMESH UNDER CARPET ON
 WOOD SUBFLOOR**

DRAWING BY:

ACI

DATE:

NOV 2009

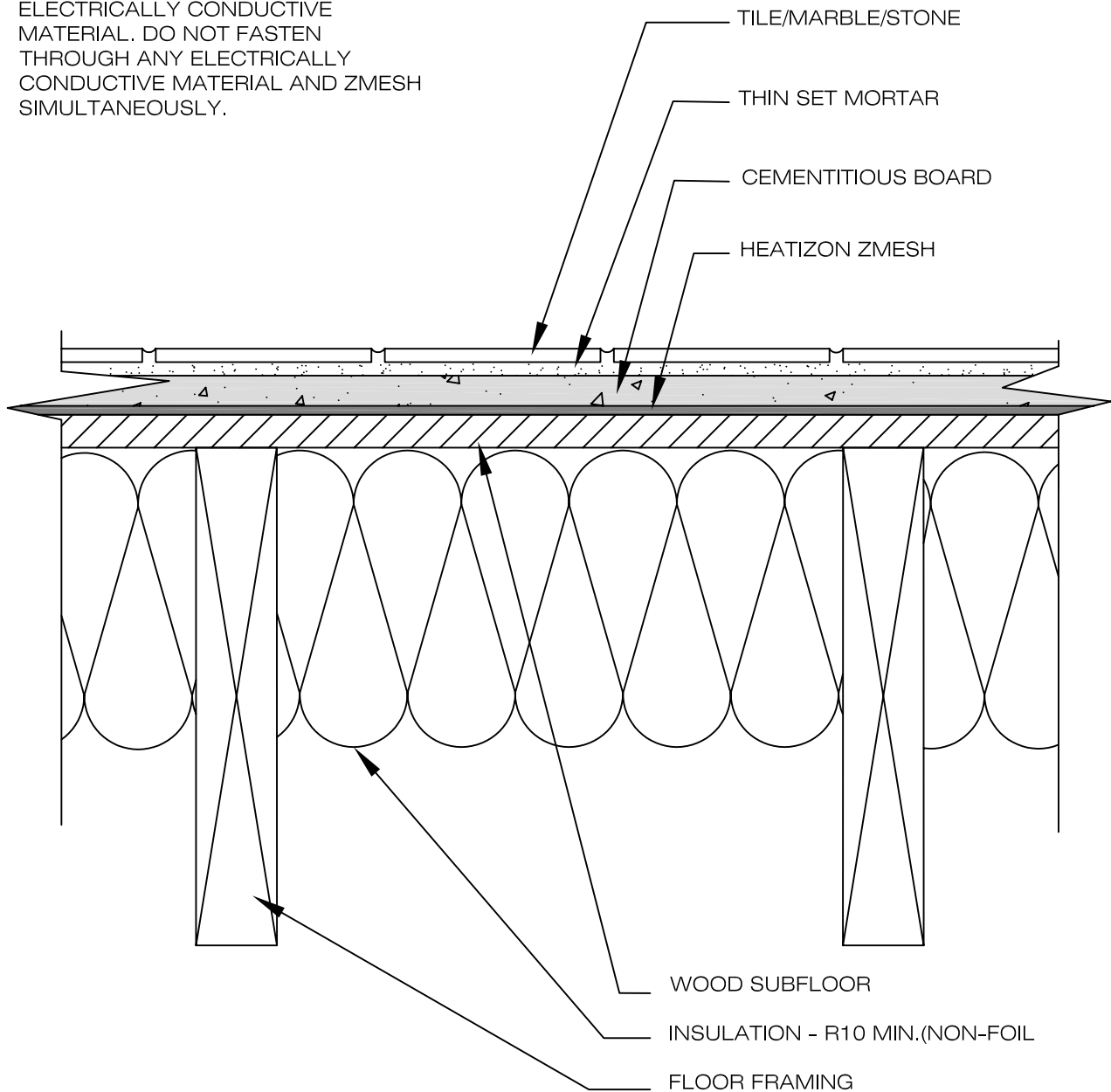
HEATIZON SYSTEMS

advanced floor heating/ snow and ice removal systems

4137 SOUTH 500 WEST, MURRAY, UTAH 84123 PH (801) 293-1232 FAX (801) 293-3077

©2009

WARNING!!
 DO NOT CUT OR DAMAGE ZMESH.
 DO NOT ALLOW ZMESH TO COME
 INTO CONTACT WITH ANY OTHER
 ELECTRICALLY CONDUCTIVE
 MATERIAL. DO NOT FASTEN
 THROUGH ANY ELECTRICALLY
 CONDUCTIVE MATERIAL AND ZMESH
 SIMULTANEOUSLY.



DRAWING NO.:

FH-3

**ZMESH UNDER TILE/STONE & FIBER
 CEMENT BOARD ON WOOD SUBFLOOR**

DRAWING BY:

ACI

DATE:

NOV 2009

HEATIZON SYSTEMS

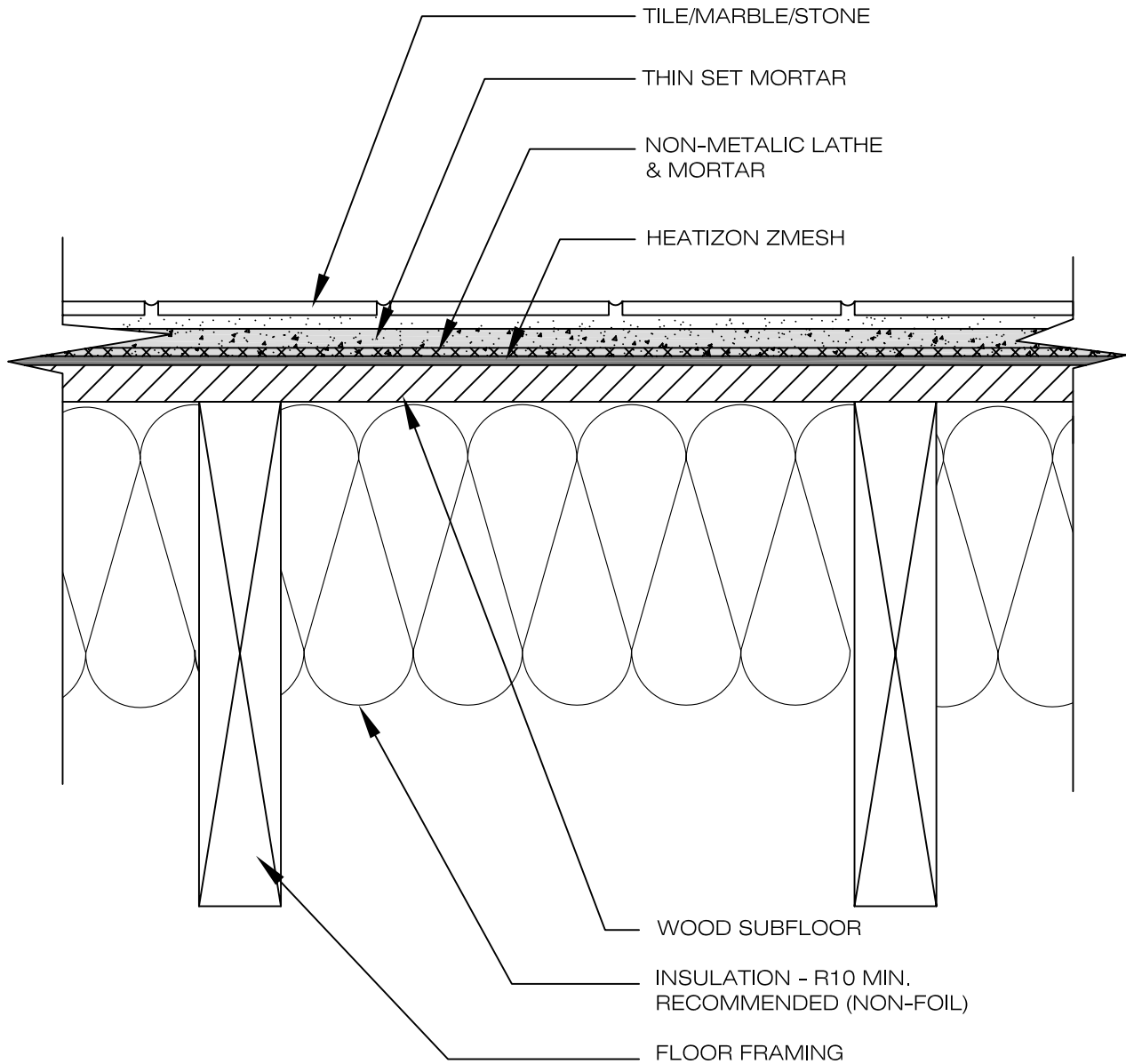
advanced floor heating/ snow and ice removal systems

4137 SOUTH 500 WEST, MURRAY, UTAH 84123 PH (801) 293-1232 FAX (801) 293-3077

©2009

When installing Heatizon Systems products, strict compliance with the National Electrical Code, the Canadian Electrical Code, state and local buildings codes, and Heatizon Systems Design and Installation Manual is essential.

WARNING!!
 DO NOT CUT OR DAMAGE HEATIZON ZMESH
 OR FASTEN THROUGH ANY OTHER
 ELECTRICALLY CONDUCTIVE MATERIAL AND
 ZMESH SIMULTANEOUSLY. METAL LATHE
 SHALL NOT BE USED IN SAME INSTALLATION
 AS HEATIZON ZMESH.



DRAWING NO.:

FH-4

**ZMESH UNDER TILE/STONE w/PLASTIC
 LATHE ON WOOD SUBFLOOR**

DRAWING BY:

ACI

DATE:

NOV 2009

HEATIZON SYSTEMS

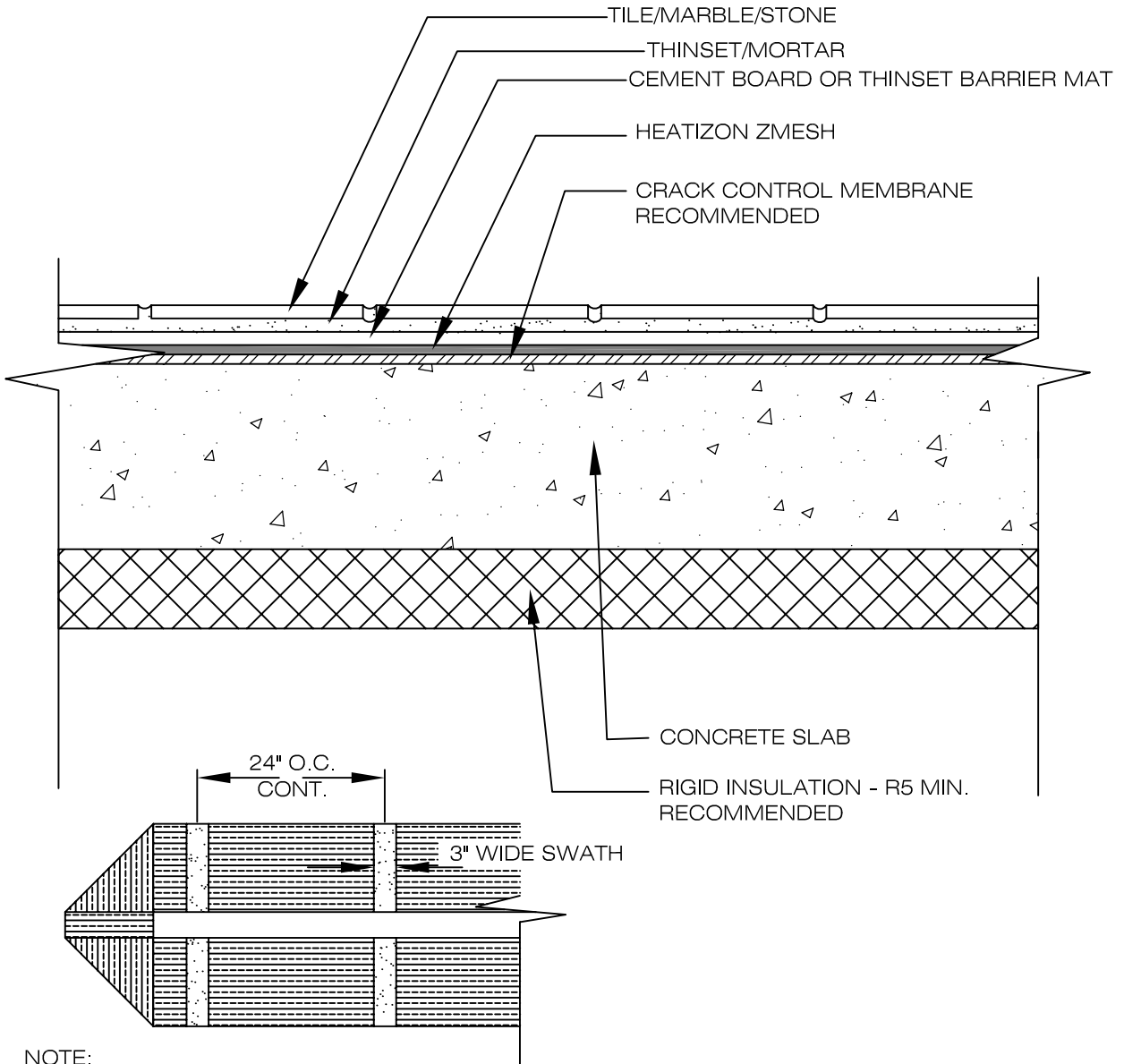
advanced floor heating/ snow and ice removal systems

4137 SOUTH 500 WEST, MURRAY, UTAH 84123 PH (801) 293-1232 FAX (801) 293-3077

©2009

When installing Heatizon Systems products, strict compliance with the National Electrical Code, the Canadian Electrical Code, state and local buildings codes, and Heatizon Systems Design and Installation Manual is essential.

WARNING!!
 DO NOT CUT OR DAMAGE ZMESH. DO NOT ALLOW ZMESH TO COME INTO CONTACT WITH ANY OTHER ELECTRICALLY CONDUCTIVE MATERIAL. DO NOT FASTEN THROUGH ANY ELECTRICALLY CONDUCTIVE MATERIAL AND ZMESH SIMULTANEOUSLY.



NOTE:
 IF INSTALLATION OF ZMESH IS ON CONCRETE, USE A FLOORING ADHESIVE TO HOLD THE ZMESH IN PLACE. PLACE 3" WIDE SWATHS OF ADHESIVE ACROSS THE ZMESH.

DRAWING NO.:

FH-5

**ZMESH UNDER TILE/STONE
 ON CONCRETE SLAB**

DRAWING BY:

RJB

DATE:

DEC 2012

HEATIZON SYSTEMS

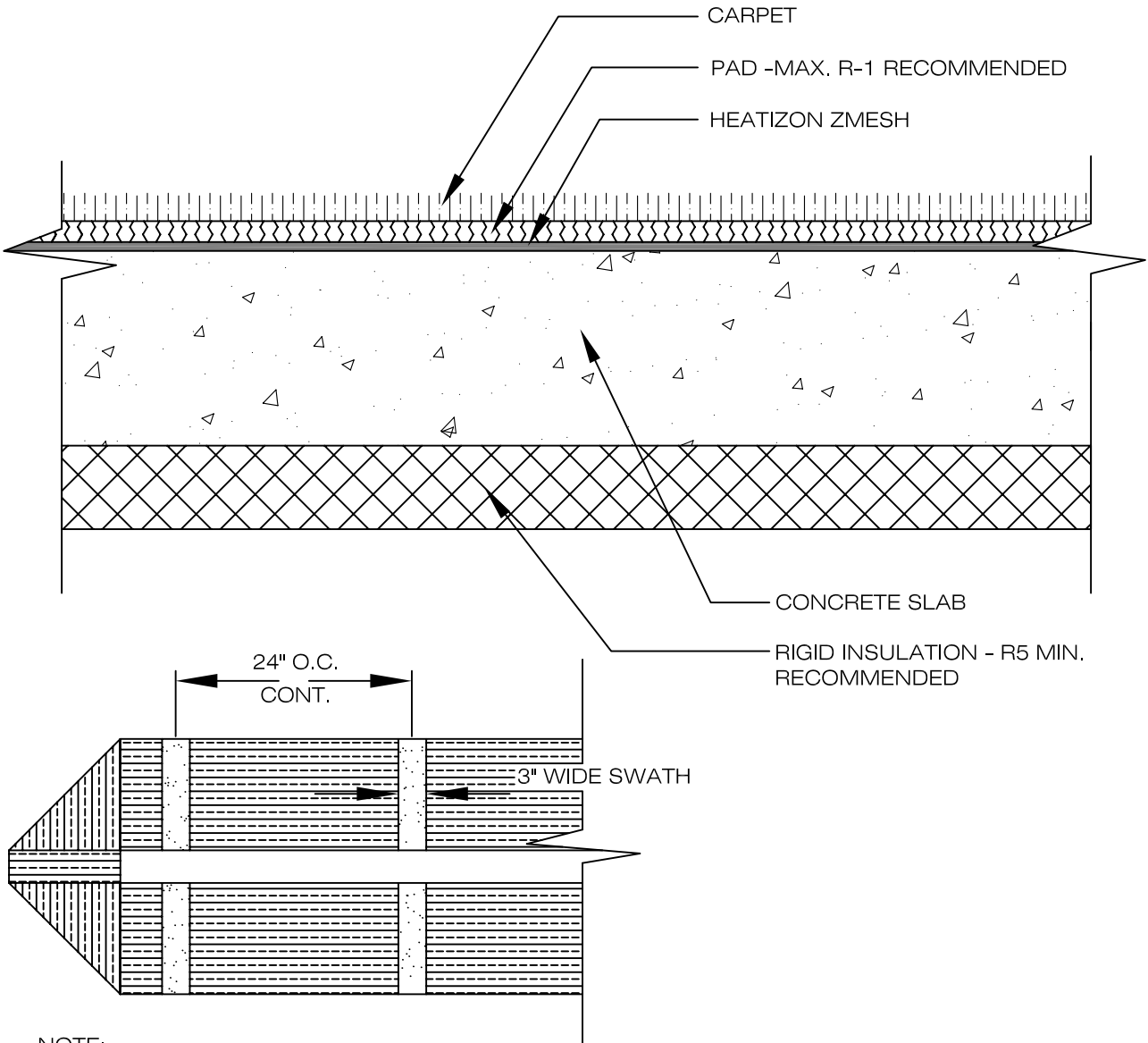
advanced floor heating/ snow and ice removal systems

4137 SOUTH 500 WEST, MURRAY, UTAH 84123 PH (801) 293-1232 FAX (801) 293-3077

©2009

WARNING!!

DO NOT CUT OR DAMAGE ZMESH. DO NOT ALLOW ZMESH TO COME INTO CONTACT WITH ANY OTHER ELECTRICALLY CONDUCTIVE MATERIAL. DO NOT FASTEN THROUGH ANY ELECTRICALLY CONDUCTIVE MATERIAL AND ZMESH SIMULTANEOUSLY.



NOTE:
IF INSTALLATION OF ZMESH IS ON CONCRETE, USE A FLOORING ADHESIVE TO HOLD THE ZMESH IN PLACE. PLACE 3" WIDE SWATHS OF ADHESIVE ACROSS THE ZMESH.

DRAWING NO.:

FH-8

**ZMESH UNDER CARPET & PAD ON
CONCRETE SLAB**

DRAWING BY:

ACI

DATE:

NOV 2009

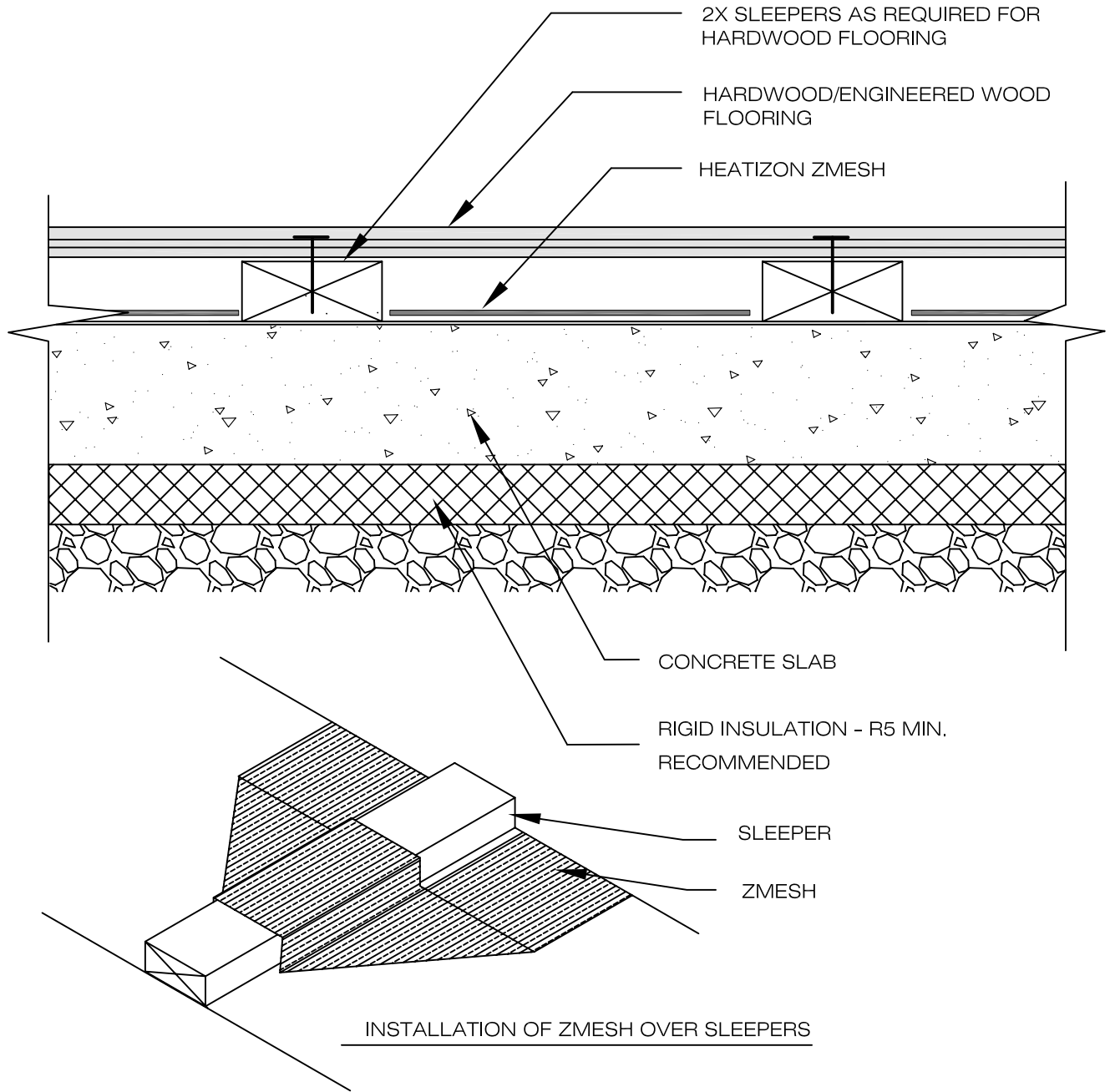
HEATIZON SYSTEMS

advanced floor heating/ snow and ice removal systems

4137 SOUTH 500 WEST, MURRAY, UTAH 84123 PH (801) 293-1232 FAX (801) 293-3077

©2009

WARNING!!
 DO NOT CUT OR DAMAGE
 HEATIZON ZMESH OR
 FASTEN THROUGH ANY OTHER
 ELECTRICALLY CONDUCTIVE
 MATERIAL AND ZMESH
 SIMULTANEOUSLY.



DRAWING NO.:
FH-12

**ZMESH ON CONCRETE
 UNDER HARDWOOD/ENGINEERED WOOD**

DRAWING BY:
 ACI
 DATE:
 NOV 2009

HEATIZON SYSTEMS

advanced floor heating/ snow and ice removal systems

4137 SOUTH 500 WEST, MURRAY, UTAH 84123 PH (801) 293-1232 FAX (801) 293-3077

©2009

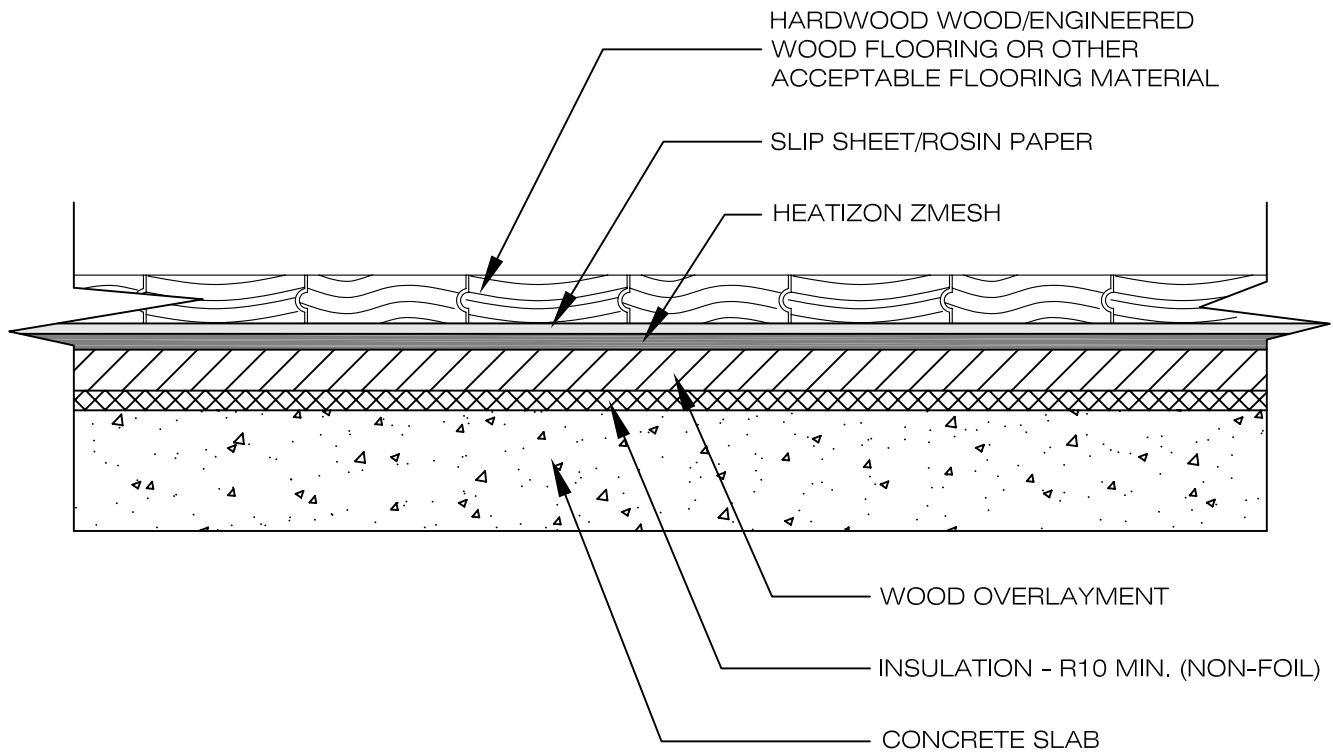
When installing Heatizon Systems products, strict compliance with the National Electrical Code, the Canadian Electrical Code, state and local buildings codes, and Heatizon Systems Design and Installation Manual is essential.

WARNING!!

DO NOT CUT OR DAMAGE ZMESH. DO NOT ALLOW ZMESH TO COME INTO CONTACT WITH ANY OTHER ELECTRICALLY CONDUCTIVE MATERIAL. DO NOT FASTEN THROUGH ANY ELECTRICALLY CONDUCTIVE MATERIAL AND ZMESH SIMULTANEOUSLY.

NOTE:

HEATIZON SYSTEMS RECOMMENDS THAT THE RADIANT FLOORING GUIDE, PUBLISHED BY THE RADIANT PANEL ASSOCIATION BE CONSULTED PRIOR TO SELECTING FLOOR COVERINGS. IN ADDITION, ALWAYS CONSULT YOUR FLOOR COVERING SUPPLIER ABOUT THE SUITABILITY OF FLOOR COVERINGS FOR INSTALLATION OVER IN-FLOOR RADIANT HEATING PRODUCTS.



DRAWING NO.:

FH-12A

**ZMESH UNDER HARDWOOD FLOORING
ON WOOD SUBFLOOR ON CONCRETE**

DRAWING BY:

ACI

DATE:

JAN 2011

HEATIZON SYSTEMS

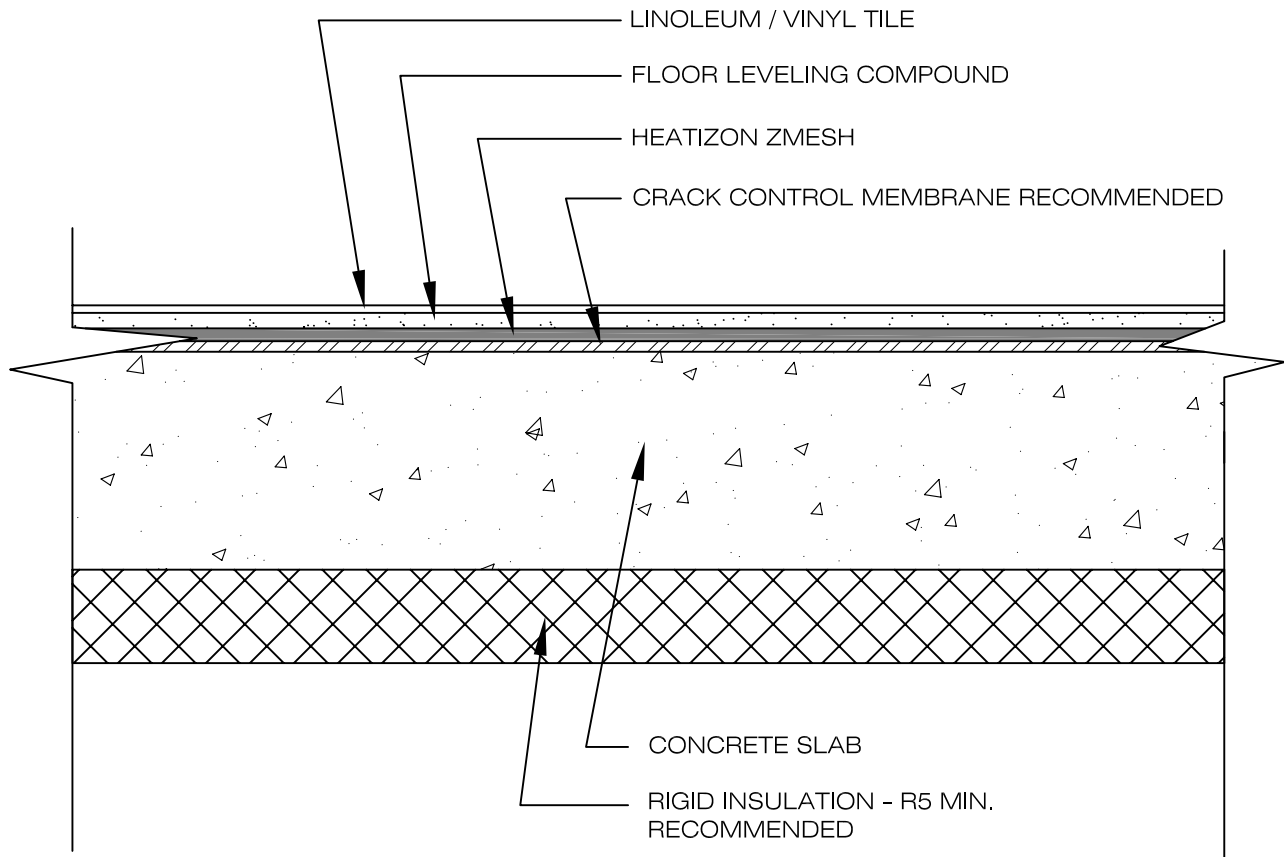
advanced floor heating/ snow and ice removal systems

4137 SOUTH 500 WEST, MURRAY, UTAH 84123 PH (801) 293-1232 FAX (801) 293-3077

©2011

When installing Heatizon Systems products, strict compliance with the National Electrical Code, the Canadian Electrical Code, state and local buildings codes, and Heatizon Systems Design and Installation Manual is essential.

WARNING!!
 DO NOT CUT OR DAMAGE ZMESH. DO NOT ALLOW
 ZMESH TO COME INTO CONTACT WITH ANY OTHER
 ELECTRICALLY CONDUCTIVE MATERIAL. DO NOT FASTEN
 THROUGH ANY ELECTRICALLY CONDUCTIVE MATERIAL
 AND ZMESH SIMULTANEOUSLY.



DRAWING NO.:

FH-14

**ZMESH UNDER LINOLEUM/VINYL
 ON CONCRETE SLAB**

DRAWING BY:

ACI

DATE:

NOV 2009

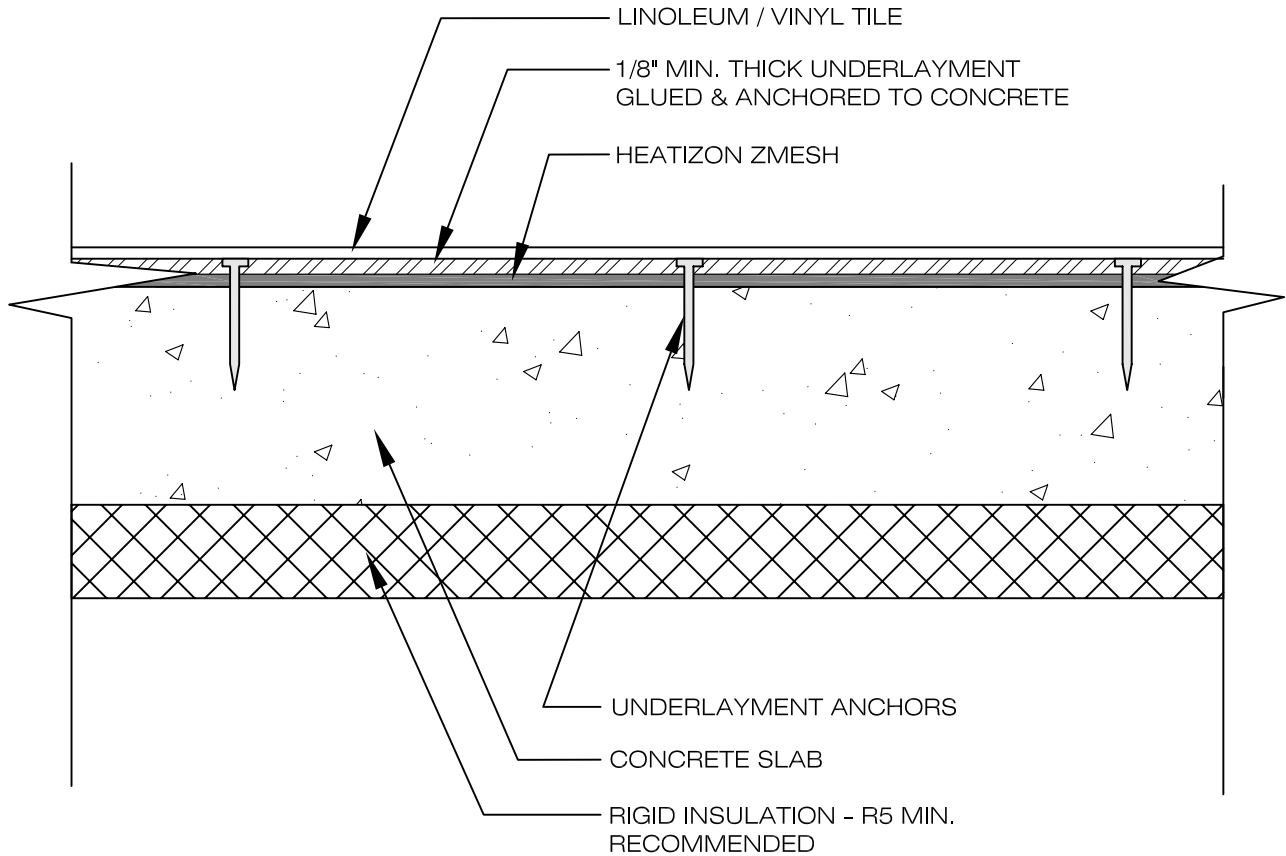
HEATIZON SYSTEMS

advanced floor heating/ snow and ice removal systems

4137 SOUTH 500 WEST, MURRAY, UTAH 84123 PH (801) 293-1232 FAX (801) 293-3077

©2009

WARNING!!
 DO NOT CUT OR DAMAGE
 HEATIZON ZMESH OR
 FASTEN THROUGH ANY OTHER
 ELECTRICALLY CONDUCTIVE
 MATERIAL AND ZMESH
 SIMULTANEOUSLY.



DRAWING NO.:

FH-15

**ZMESH w/UNDERLAYMENT UNDER
 LINOLEUM/VINYL ON CONCRETE SLAB**

DRAWING BY:

ACI

DATE:

NOV 2009

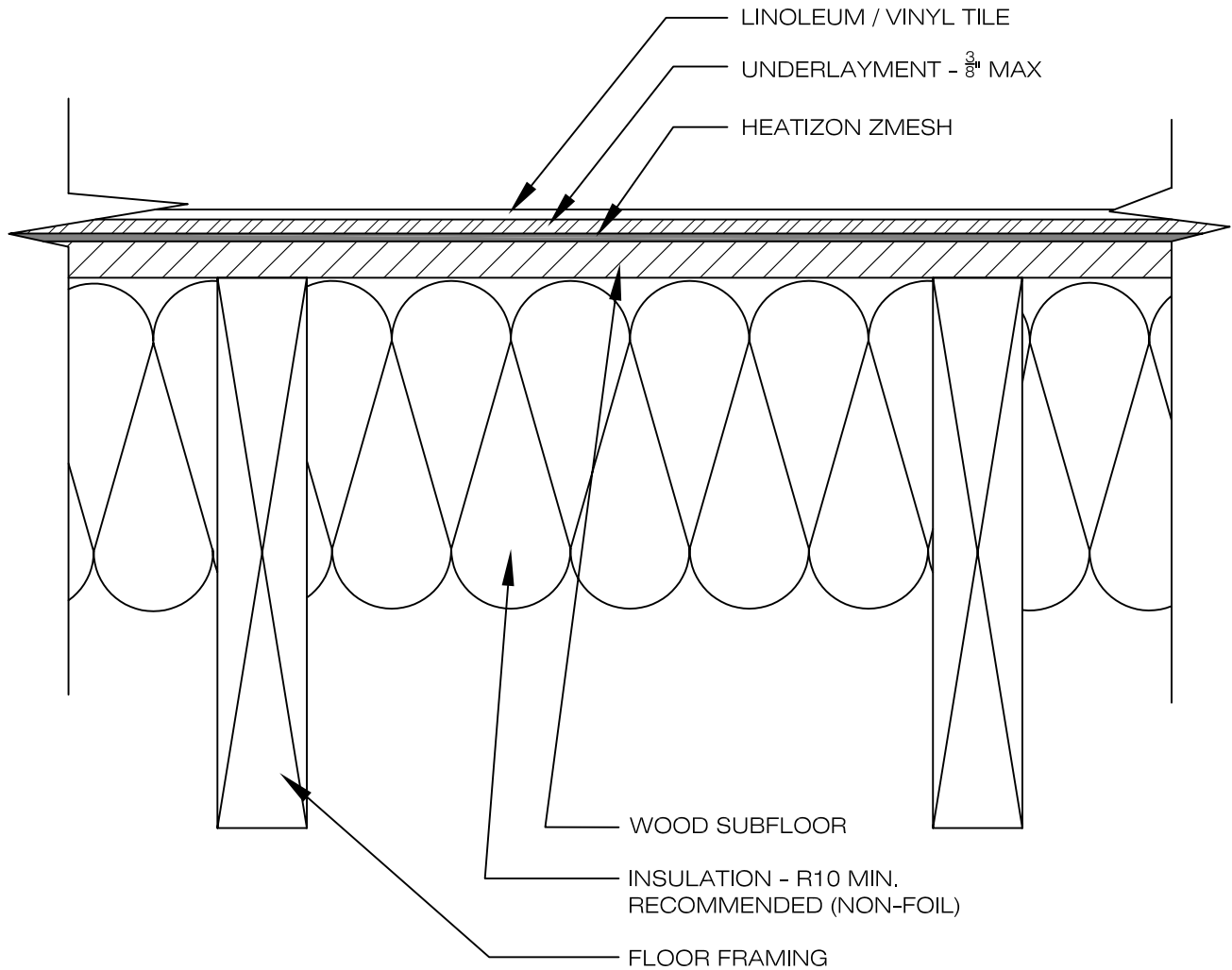
HEATIZON SYSTEMS

advanced floor heating/ snow and ice removal systems

4137 SOUTH 500 WEST, MURRAY, UTAH 84123 PH (801) 293-1232 FAX (801) 293-3077

©2009

WARNING!!
 DO NOT CUT OR DAMAGE
 HEATIZON ZMESH OR
 FASTEN THROUGH ANY OTHER
 ELECTRICALLY CONDUCTIVE
 MATERIAL AND ZMESH
 SIMULTANEOUSLY.
 METAL LATHE SHALL NOT BE
 USED IN SAME INSTALLATION AS
 HEATIZON ZMESH.



DRAWING NO.:
FH-16

**ZMESH BELOW LINOLEUM/VINYL &
 UNDERLAYMENT ON WOOD SUBFLOOR**

DRAWING BY:
 ACI
 DATE:
 NOV 2009

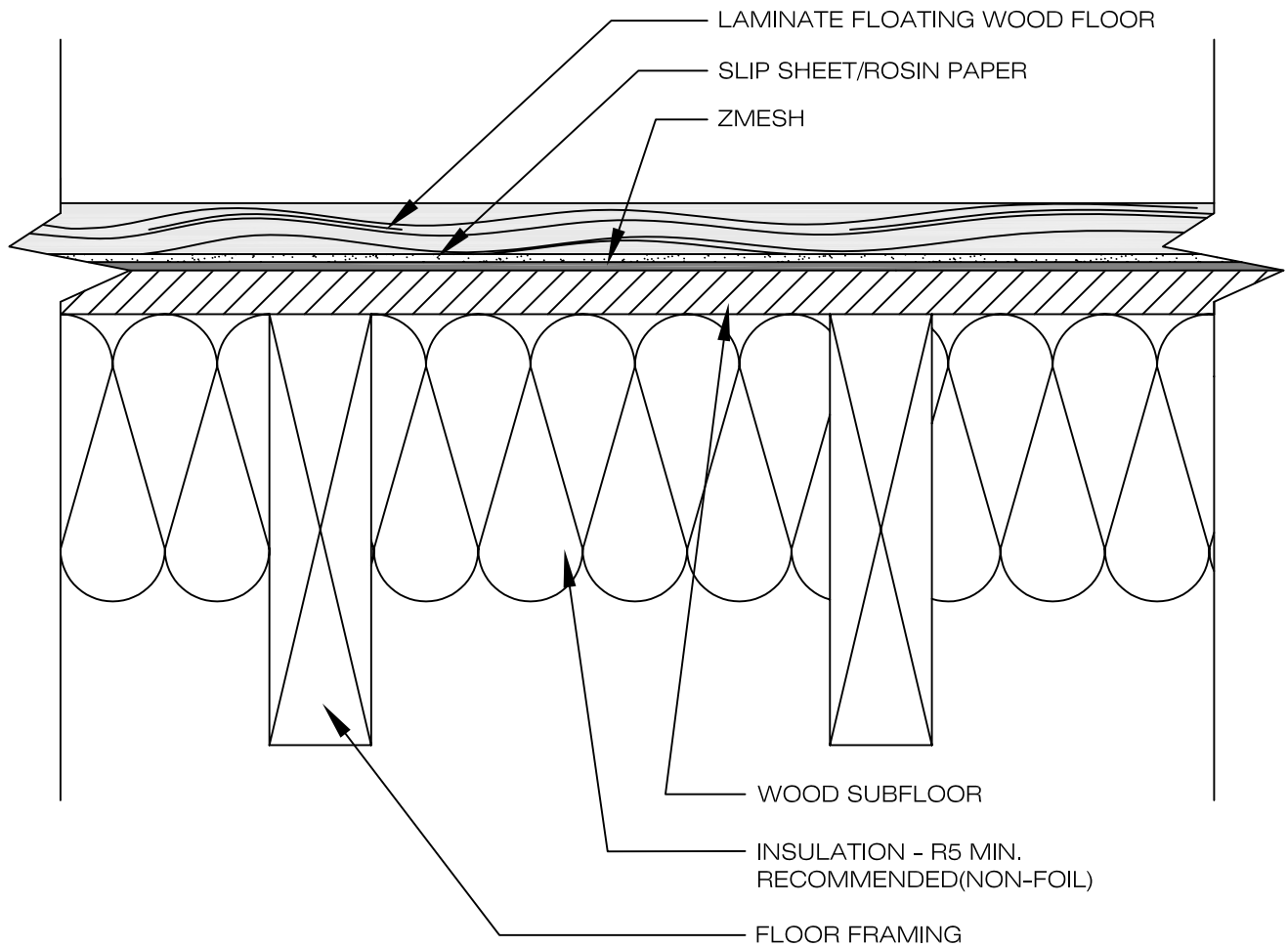
HEATIZON SYSTEMS

advanced floor heating/ snow and ice removal systems

4137 SOUTH 500 WEST, MURRAY, UTAH 84123 PH (801) 293-1232 FAX (801) 293-3077

©2009

WARNING!!
 DO NOT CUT OR DAMAGE ZMESH.
 DO NOT ALLOW ZMESH TO COME
 INTO CONTACT WITH ANY OTHER
 ELECTRICALLY CONDUCTIVE
 MATERIAL. DO NOT FASTEN
 THROUGH ANY ELECTRICALLY
 CONDUCTIVE MATERIAL AND
 ZMESH SIMULTANEOUSLY.



DRAWING NO.:
FH-17

**ZMESH UNDER LAMINATE FLOATING
 WOOD FLOORING ON WOOD SUBFLOOR**

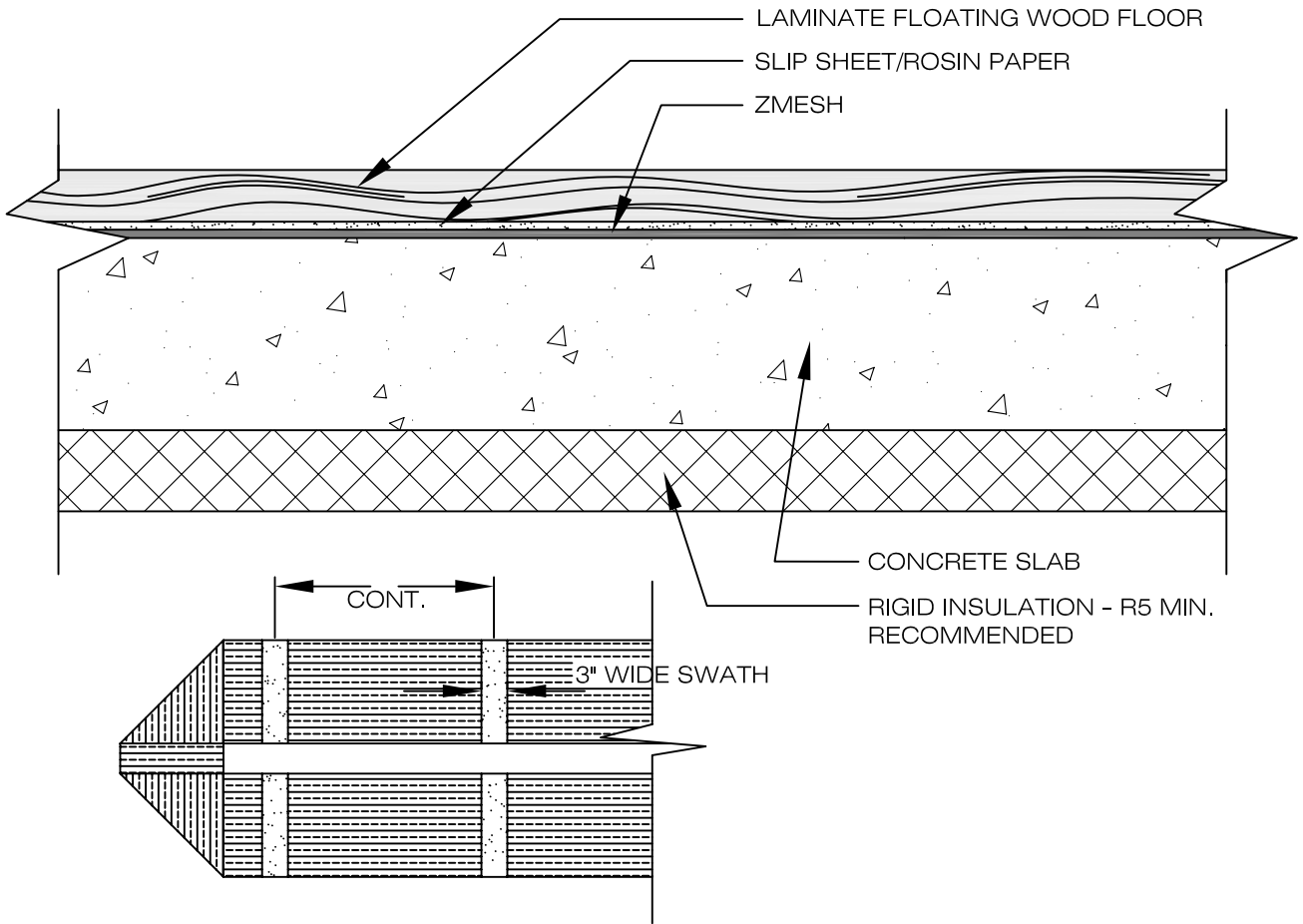
DRAWING BY:
 ACI
 DATE:
 NOV 2009

HEATIZON SYSTEMS

advanced floor heating/ snow and ice removal systems
 4137 SOUTH 500 WEST, MURRAY, UTAH 84123 PH (801) 293-1232 FAX (801) 293-3077
 ©2009

When installing Heatizon Systems products, strict compliance with the National Electrical Code, the Canadian Electrical Code, state and local buildings codes, and Heatizon Systems Design and Installation Manual is essential.

WARNING!!
 DO NOT CUT OR DAMAGE ZMESH. DO NOT ALLOW ZMESH TO COME INTO CONTACT WITH ANY OTHER ELECTRICALLY CONDUCTIVE MATERIAL. DO NOT FASTEN THROUGH ANY ELECTRICALLY CONDUCTIVE MATERIAL AND ZMESH SIMULTANEOUSLY.



NOTE:
 IF INSTALLATION OF ZMESH IS ON CONCRETE, USE A FLOORING ADHESIVE TO HOLD THE ZMESH IN PLACE. PLACE 3" WIDE SWATHS OF ADHESIVE ACROSS THE ZMESH.

DRAWING NO.:
FH-18

**ZMESH UNDER LAMINATE FLOATING
 WOOD FLOORING ON CONCRRETE SLAB**

DRAWING BY:
 ACI
 DATE:
 NOV 2009

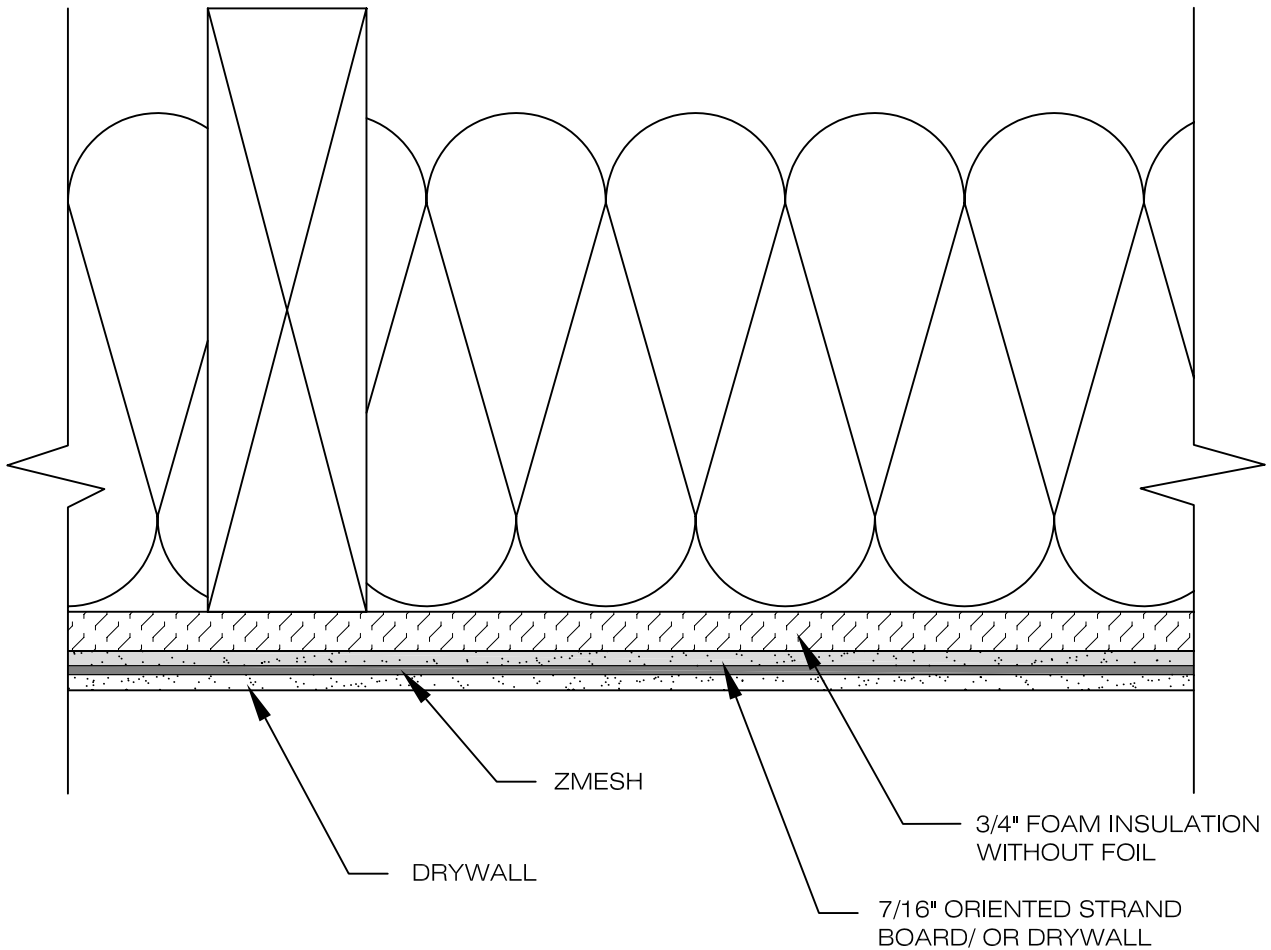
HEATIZON SYSTEMS

advanced floor heating/ snow and ice removal systems

4137 SOUTH 500 WEST, MURRAY, UTAH 84123 PH (801) 293-1232 FAX (801) 293-3077

©2009

WARNING!!
 DO NOT CUT OR DAMAGE ZMESH. DO NOT ALLOW ZMESH TO
 COME INTO CONTACT WITH ANY OTHER ELECTRICALLY
 CONDUCTIVE MATERIAL. DO NOT FASTEN THROUGH ANY
 ELECTRICALLY CONDUCTIVE MATERIAL AND ZMESH
 SIMULTANEOUSLY.



NOTE:
 HEATIZON'S ZMESH PRODUCT IS LISTED TO UL AND CSA STANDARDS,
 HOWEVER THIS APPLICATION IS NOT SPECIFICALLY INCLUDED IN
 THOSE LISTINGS. INSTALL AS CALLED FOR BY THE NEC OR CEC.

DRAWING NO.:

IH-19

ZMESH IN CEILING - CEILING DETAIL

DRAWING BY:

ACI

DATE:

NOV 2009

HEATIZON SYSTEMS

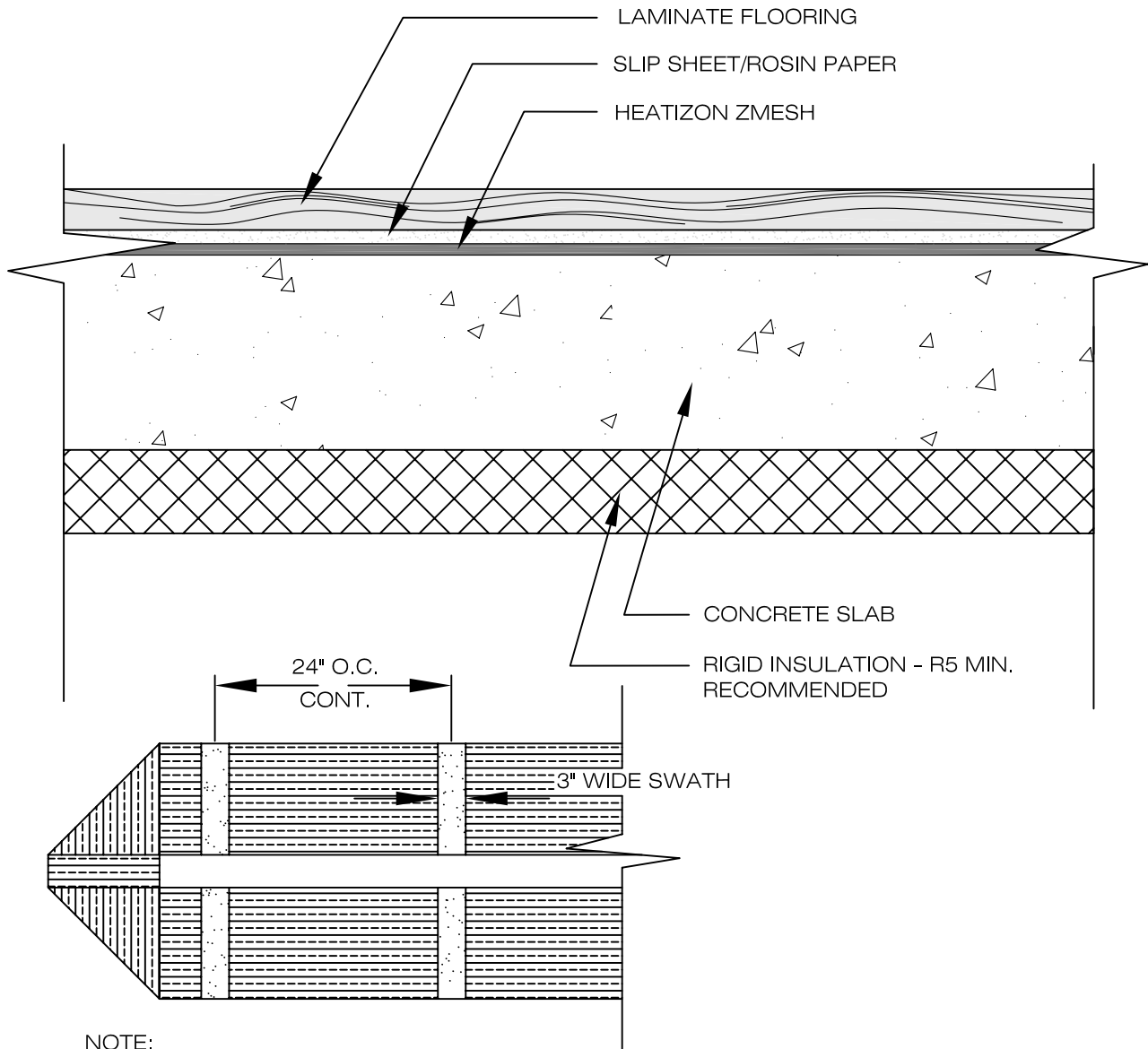
advanced floor heating/ snow and ice removal systems

4137 SOUTH 500 WEST, MURRAY, UTAH 84123 PH (801) 293-1232 FAX (801) 293-3077

©2009

When installing Heatizon Systems products, strict compliance with the National Electrical Code, the Canadian Electrical Code, state and local buildings codes, and Heatizon Systems Design and Installation Manual is essential.

WARNING!!
 DO NOT CUT OR DAMAGE
 HEATIZON ZMESH OR
 FASTEN THROUGH ANY OTHER
 ELECTRICALLY CONDUCTIVE
 MATERIAL AND ZMESH
 SIMULTANEOUSLY.



NOTE:
 IF INSTALLATION OF ZMESH IS ON CONCRETE, USE A
 FLOORING ADHESIVE TO HOLD THE ZMESH IN PLACE.
 PLACE 3" WIDE SWATHS OF ADHESIVE ACROSS THE ZMESH.

DRAWING NO.:

FH-20

**ZMESH UNDER LAMINATE FLOORING ON
 CONCRETE SLAB**

DRAWING BY:

ACI

DATE:

NOV 2009

HEATIZON SYSTEMS

advanced floor heating/ snow and ice removal systems

4137 SOUTH 500 WEST, MURRAY, UTAH 84123 PH (801) 293-1232 FAX (801) 293-3077

©2009